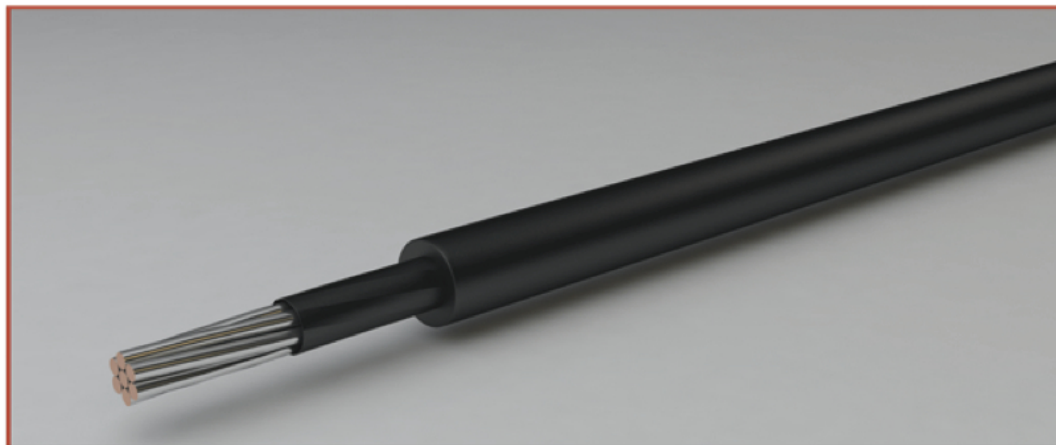


anotec

CU/PVDF/HMWPE



Type:	C/PVDF/HMWPE
Construction:	1) Tinned annealed Class 2 copper conductor or untinned annealed Class 2 copper conductor on demand 2) Special PVDF insulation 3) HMWPE sheath
Application:	Used as header cables on cathodic protection systems in order to protect electrolytic and galvanic corrosion on pipelines, storage tanks and other buried or water submerged metallic surfaces
Technical data:	Max. operating temperature: -55+105° C Rated voltage: 0.6/1 KV

Rated Cross Section (mm ²)	Copper Conductor	Insulation Thickness (mm)	Sheath thickness (mm)	Approx. overall diameter (mm)	Approx. net weight (kg/km)
1 x 1,5	7 x 0,66	0,5	1,65	6,00	42
1 x 2,5	7 x 0,83	0,5	1,65	6,40	54
1 x 4	7 x 1,03	0,5	1,65	6,90	70
1 x 6	7 x 1,34	0,5	1,65	7,50	94
1 x 10	7 x 1,69	0,5	1,65	8,40	141
1 x 16	7 x 2,10	0,5	1,65	9,50	203
1 x 25	19 x 1,51	0,5	1,65	10,70	290
1 x 35	19 x 1,75	0,5	1,65	11,90	388
1 x 50	19 x 2,12	0,5	1,65	13,20	504
1 x 70	19 x 2,50	0,5	1,65	15,00	711
1 x 95	37 x 2,03	0,5	1,65	16,90	962
1 x 120	37 x 2,25	0,5	1,65	18,60	1214
1 x 150	37 x 2,50	0,5	1,65	20,20	1473
1 x 185	37 x 2,90	0,5	1,65	21,90	1796
1 x 240	61 x 2,50	0,5	1,65	24,70	2382