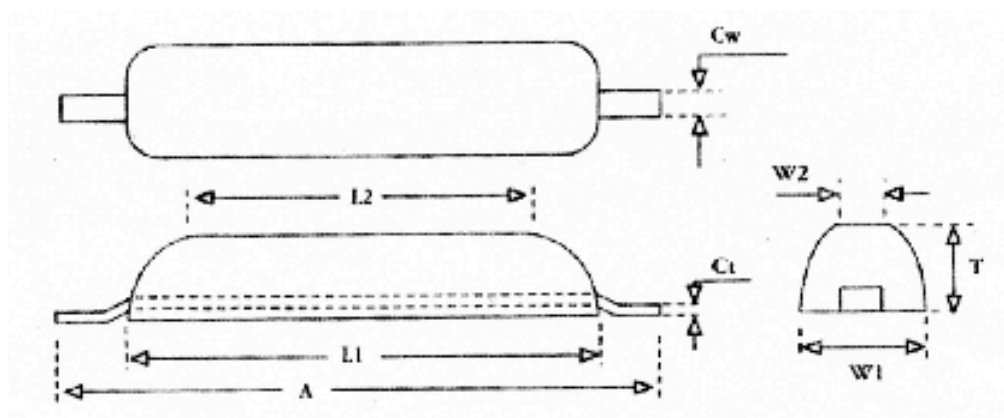


ALUMINIUM SACRIFICIAL ANODES



Anode Ref.	A (mm)	L1 (mm)	L2 (mm)	W1 (mm)	W2 (mm)	T (mm)	Cw (mm)	Ct (mm)	Nett weight (Kg)	Gross weight (Kg)
ATA 016	300	200	140	95	75	33	25	8	1.2	1.7
ATA 034	350	265	125	150	125	35	40	8	2.7	3.6
ATA 056	530	390	285	155	130	36	40	8	4.6	5.9
ATA 084	750	580	440	140	115	40	40	8	7.0	8.8
ATA 098	650	555	460	137	115	50	40	8	8.5	10.2
ATA 119	650	550	470	135	115	65	50	8	10.3	12.3
ATA 152	750	590	430	152	120	70	50	8	13.3	15.8

Anode characteristics:

- Open circuit potential: -1.07V (Ag/AgCl reference cell).
- Anode capacity: 2550 Amp. Hr/Kg.
- Consumption rate: 3.4 Kg/Amp. Yr.

Chemical composition:

Zn%	Cu%	Si%	Fe%	In%	Al%
2.0-5.0%	0.05% max.	0.13% max.	0.13% max.	0.01-0.05% max.	Remainder