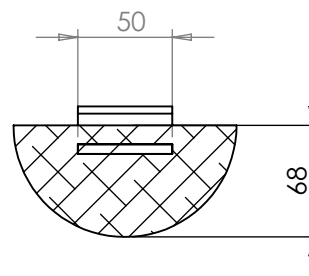


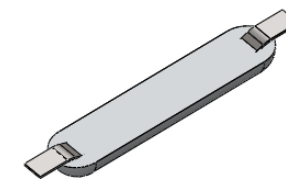
SECTION A-A
SCALE 1 : 4



SECTION B-B
SCALE 1 : 4

NOTES:

1. Net Weight: 10.30 Kg
2. Gross Weight: 11.80 Kg
3. Insert Weight: 1.50 Kg
4. Insert quality:
Plate, bar sections: EN10025
grade S235 or S275
5. Insert surface preparation
For aluminium anodes
minimum quality
ISO 8501-1 SA2 1/2
6. All dimensions are in mm



No	DATE	REVISION	REV/CHK	APPR

ANOTEC bvba
Brusselsestraat 49
1750 Lennik , Belgium

DRAWING NAME:

ANODE GENERAL DESCRIPTION

ANODE TYPE:

A120

anotec
SACRIFICIAL ANODES

DESIGNED	P. P.	BELONGS	
STUDIED		PAGE	1/1
APPROVED		SCALE	1:4
DRAWING NUMBER	DATE		29-06-2015
A120-555-132-68	CODE		